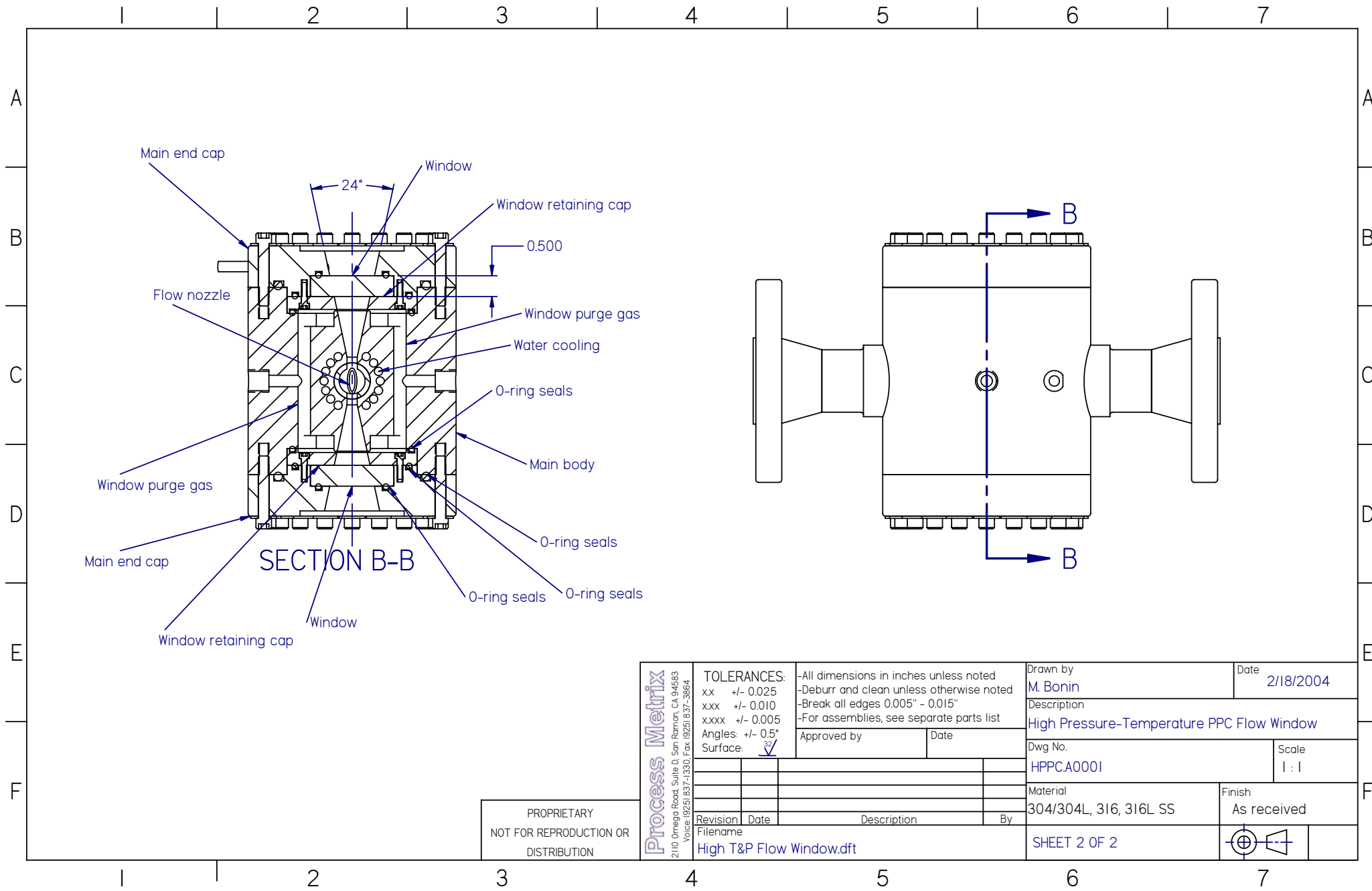


PROPRIETARY
NOT FOR REPRODUCTION OR
DISTRIBUTION

Process Metrix 2110 Omega Road, Suite D, San Ramon, CA 94583 Voice: (925) 837-1330, Fax: (925) 837-3864	TOLERANCES: xx +/- 0.025 xxx +/- 0.010 xxxx +/- 0.005 Angles: +/- 0.5° Surface: $\sqrt{32}$		-All dimensions in inches unless noted -Deburr and clean unless otherwise noted -Break all edges 0.005" - 0.015" -For assemblies, see separate parts list		Drawn by M. Bonin	Date 2/18/2004
					Description High Pressure-Temperature PPC Flow Window	
					Dwg No. HPPCA0001	Scale 1 : 1
					Material 304/304L, 316, 316L SS	Finish As received
	Revision 1	Date 2/18/04	Description High T&P Flow Window.dft	By M. Bonin	SHEET 1 OF 2	



PROPRIETARY
NOT FOR REPRODUCTION OR
DISTRIBUTION

Process Matrix
2110 Omega Road, Suite D, San Ramon, CA 94583
Voice: (925) 837-1330, Fax: (925) 837-3864

TOLERANCES:		-All dimensions in inches unless noted	
xx	+/- 0.025	-Deburr and clean unless otherwise noted	
xxx	+/- 0.010	-Break all edges 0.005" - 0.015"	
xxxx	+/- 0.005	-For assemblies, see separate parts list	
Angles:	+/- 0.5°	Approved by	Date
Surface:	$\sqrt{32}$		
Revision	Date	Description	By
Filename: High T&P Flow Window.dft			

Drawn by	M. Bonin	Date	2/18/2004
Description			
High Pressure-Temperature PPC Flow Window			
Dwg No.	HPPCA0001	Scale	1:1
Material	304/304L, 316, 316L SS	Finish	As received
SHEET 2 OF 2			